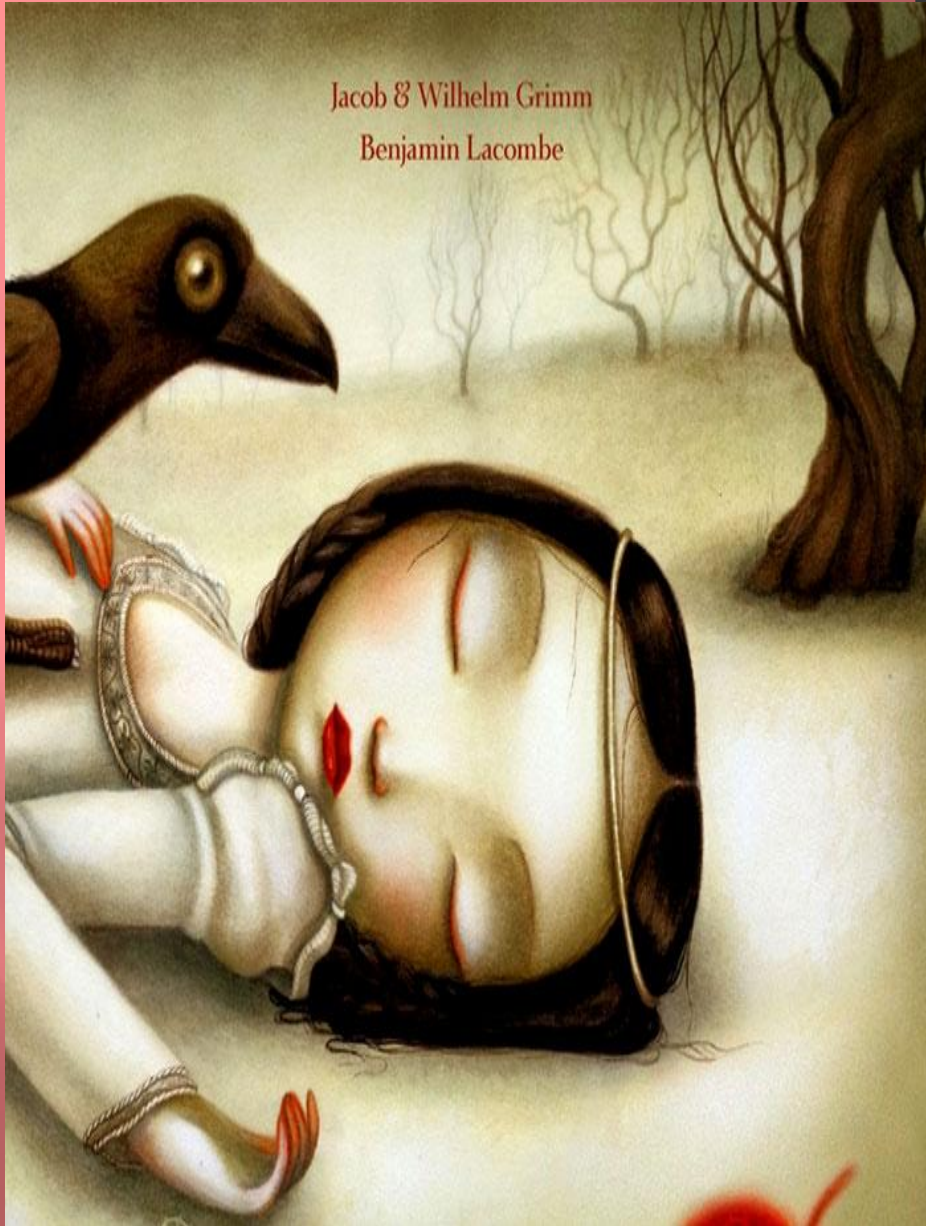


Jacob & Wilhelm Grimm
Benjamin Lacombe





CAN YOU GUESS WHO SHE IS?

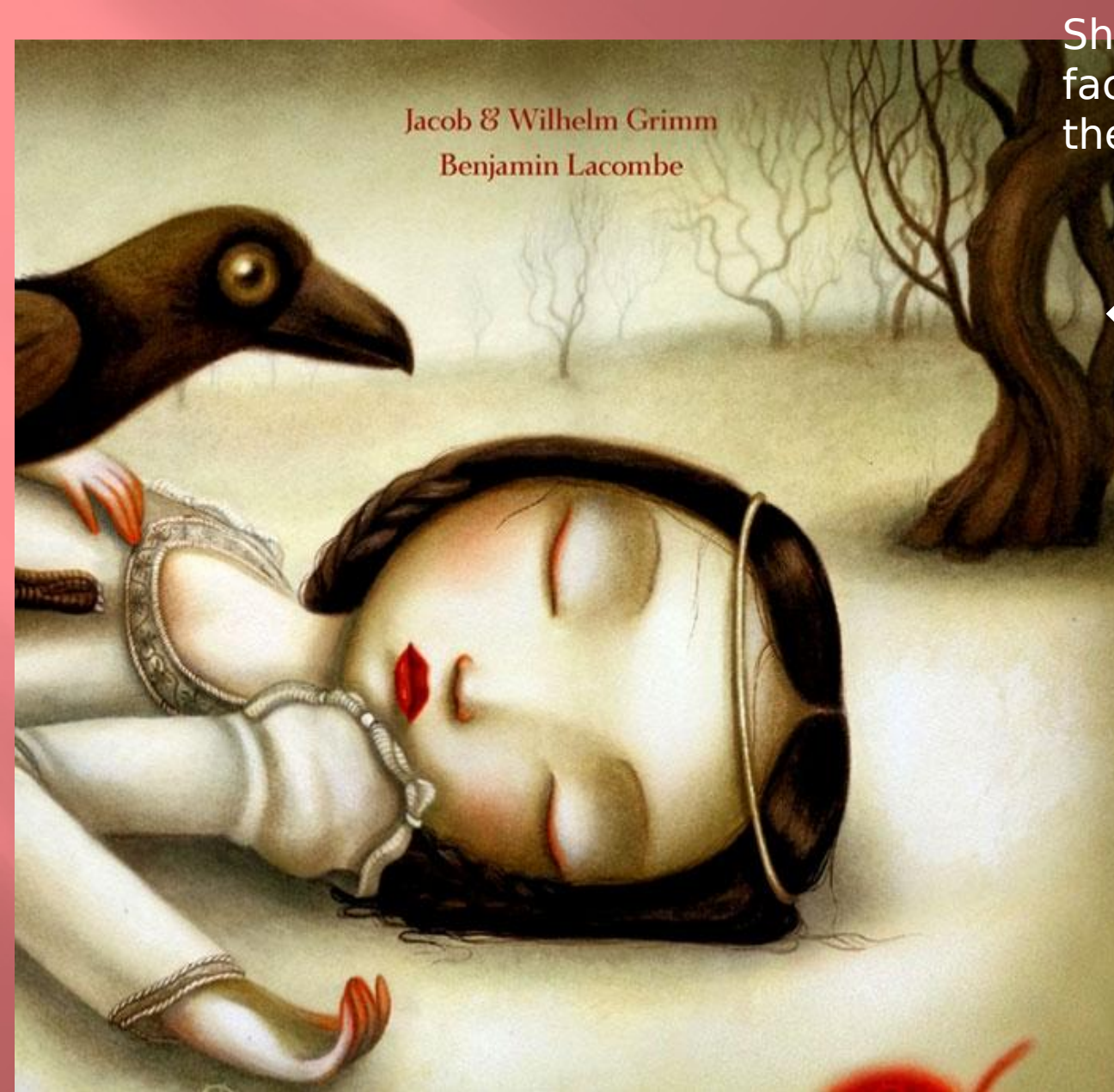
« La peau blanche comme la neige, les cheveux noirs comme l'ébène, et les lèvres rouges comme le sang. »

“A child as white as snow, with lips as red as blood, and hair as black as ebony.”

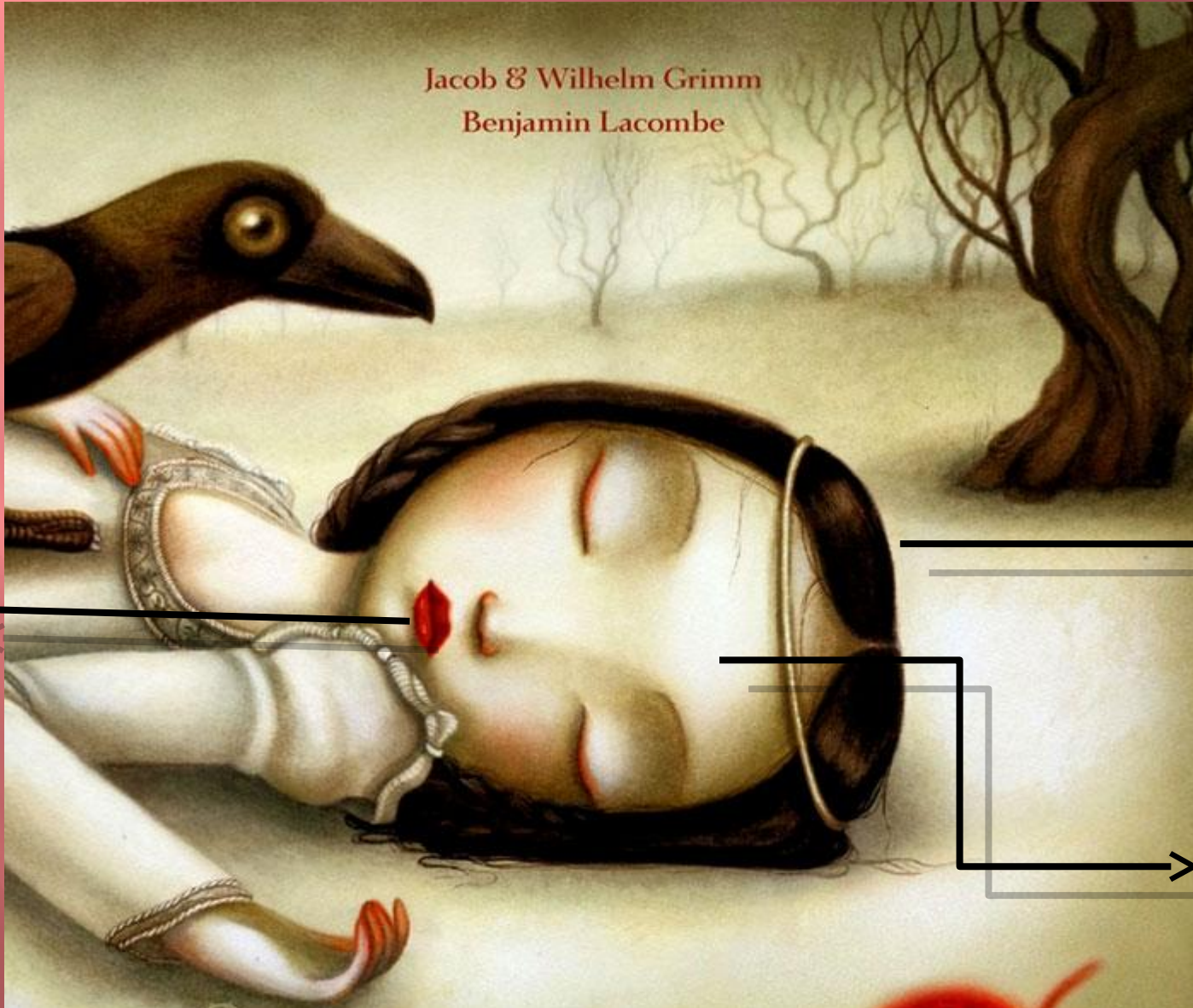
Show me the parts of the face that correspond to these phrases

Jacob & Wilhelm Grimm
Benjamin Lacombe

- ❖ As white as snow
- ❖ As red as blood
- ❖ As black as ebony



Snow White:



Jacob & Wilhelm Grimm
Benjamin Lacombe

As red
as
blood

As black
as ebony

As white
as snow